



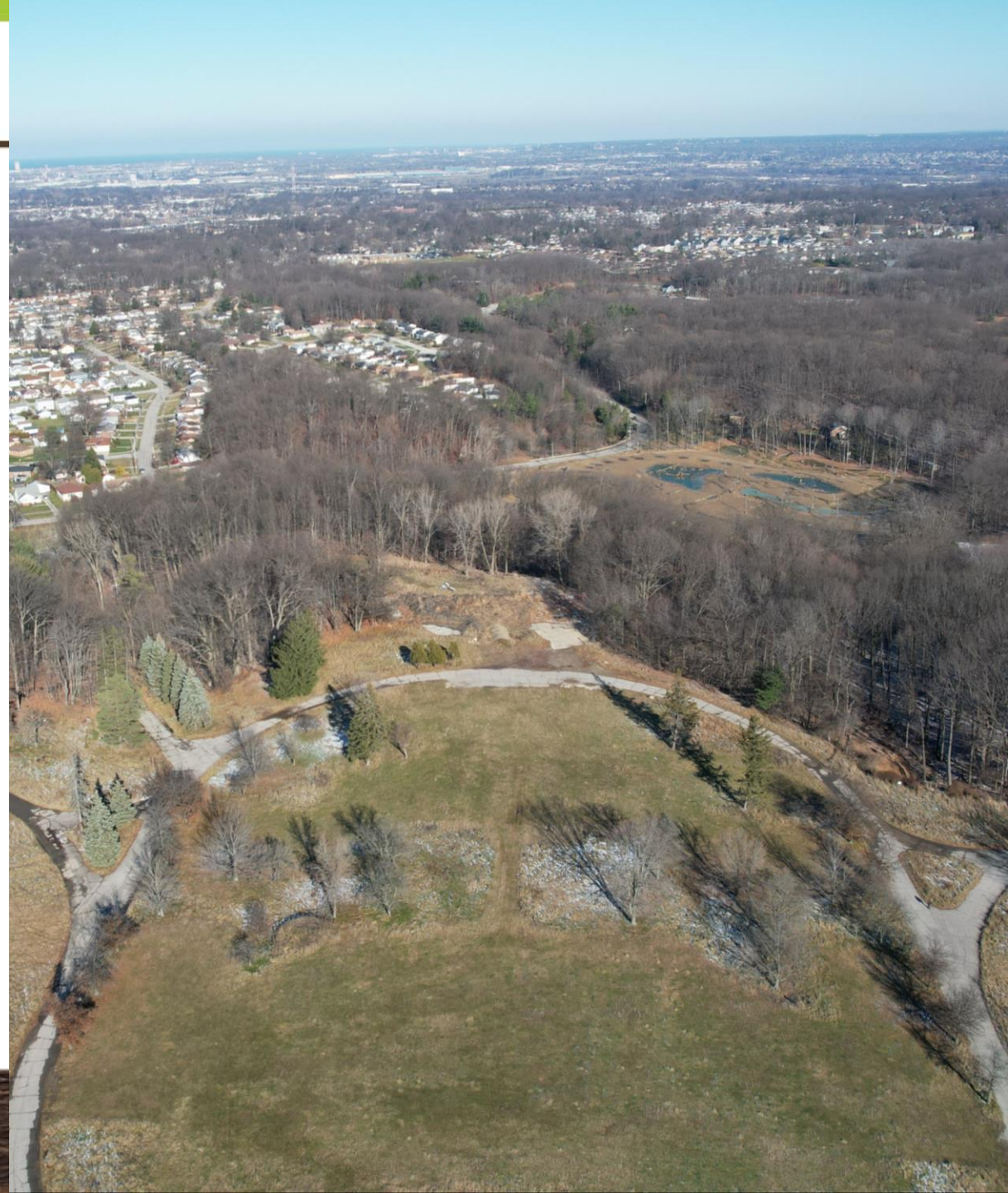
Cleveland Metroparks®

FIND YOUR PATH

2023 Real Estate Report

Overview

- Conservation at a Glance
- Our Year's Work
 - Golf Course Properties
 - City Partnership Properties
 - West Creek Conservancy Partnership
 - Donated Properties
 - Reservation Expansions
 - Land Bank Properties
- Conservation by the Numbers
 - Reservation Acreage
 - Park Acreage by County
 - Park Acreage by Community
 - Watershed Data
- Surpassing 25,000 Acres
- Golf Course Acquisitions
- Barge No. 225
- Land Stewardship



Conservation at a Glance

- 20 transactions totaling 499 acres
- Emerald Necklace total acreage: 25,204
- 177 acres donated, a value of \$9,513,400
- Land acquisition costs totaled \$11,960,000 (included \$2,240,000 covered by grant funds)
- Total land value: \$21,473,400 (with \$9,720,000 in Cleveland Metroparks funds)
- New parkland in 11 communities and 11 reservations
- Protection of 29 acres of wetland and 154 acres of forest
- Acquired 7.7 miles of property for existing and future trail connections
- Preserved 9,430 feet of headwater streams and 8,975 feet of rivers and creeks



Our Year's Work

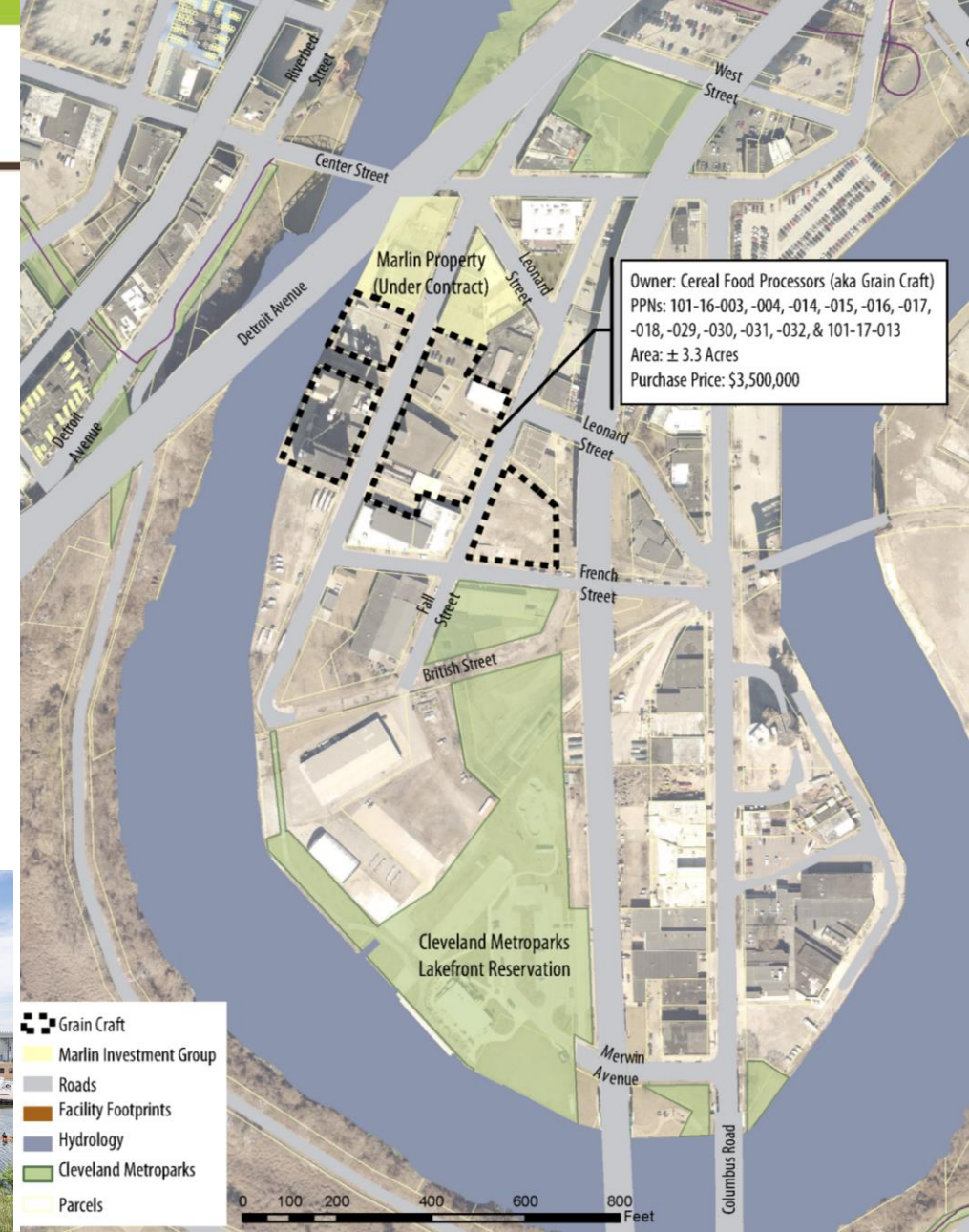
- Acquired **\$21.5** million in real estate, Cleveland Metroparks provided **45%** of the funding for that land value
- **339** acres of land was acquired through grants or donations
- Partnerships:
 - **101** acres from West Creek Conservancy
 - Gordon Park South, City of Cleveland
 - Viaduct Park Expansion, City of Bedford
- Grants:
 - Clean Ohio Conservation Fund
 - NAWCA
 - City of Solon
- Two approximately **150**-acre golf courses
- Grain Craft Property, Columbus Rd. Peninsula
- Barge No. 225, Lakefront Nature Center
- Surpassed **25,000** acres, over **1,000** acres in just three short years



Grain Craft, LLC Property (3.3 Acres)

Lakefront Reservation

- Since the acquisition of Rivergate Park in 2012 and the Lakefront Reservation in 2013, have been increasing high-quality public access to Lake Erie and the Cuyahoga River.
- Facilitated connectivity through trail connections in these areas including the Red Line Greenway, Cleveland Foundation Centennial Lake Link Trail, Whiskey Island Connector, and Towpath Trail.
- Continue exploring opportunities for expanded greenspace along the Cuyahoga River
- Under contract with Marlin Investment Group for the acquisition of 1.2 acres south of Heritage Park I, which is anticipated to close in April 2024
- Located north of French St. and both east and west of Fall St., in close proximity to Canal Basin Park and Heritage Park I
- Connecting Rivergate Park and the Flats East Bank along the Cuyahoga River



Golf Course Properties



Hawthorne Valley Country Club, LLC (149.2 Acres) South Chagrin Reservation

- 204 acres formerly operated as the Hawthorne Valley Country Club
- Maintained as golf course until 2018
- Located south of Aurora Rd. in Solon
- Includes Hawthorn Creek, a tributary to Tinker's Creek
- Thousands of linear feet of stream habitat
- Pockets of forests and wetlands
- Tremendous potential for stream, wetland, and plant community restoration.
- Clean Ohio Conservation Fund provided \$2,040,000 for acquisition
- City of Solon provided \$100,000, and has agreed to give another \$400,000 (contingent upon tax revenue from future residential development)
- Esther and Nathan Rzepka Park

Ironwood Golf Course, Inc. (154.3 Acres) Hinckley Reservation

- Preservation opportunity along the East Branch Rocky River
- Adjacent to an existing conservation easement and north of Rising Valley Park
- 445 State Rd. in Hinckley Twp.
- Scenic 18-hole facility
- Features hardwood forest, lakes, rivers, gorges and contoured greens
- Designed by Harold Paddock, traditional parkland golf course, opened in 1967
- Opportunity for stream restoration projects
- Creates core natural resource preserve along the EBRR corridor
- Continue to operate as a golf course (minimum of 10 years)



City Partnership Properties

City of Cleveland Gordon Park South (47.8 Acres) Lakefront Reservation

- 6th Amendment to the Lakefront Lease with the City of Cleveland
- Located east of 72nd St, south of Interstate 90, west of MLK Jr. Dr.
- Received \$8 million from the Jack, Joseph and Morton Mandel Foundation to revitalize Gordon Park South
- Activate Gordon Park with active and passive recreational amenities
- Also contributed \$5 million towards the construction of the Cleveland Lakefront Bikeway from E. 9th to E. 55th St.
- The combined \$13 million gift marks the largest private donation in Cleveland Metroparks history

City of Bedford Land Reutilization Program Viaduct Park Expansion (6.4 Acres) Bedford Reservation

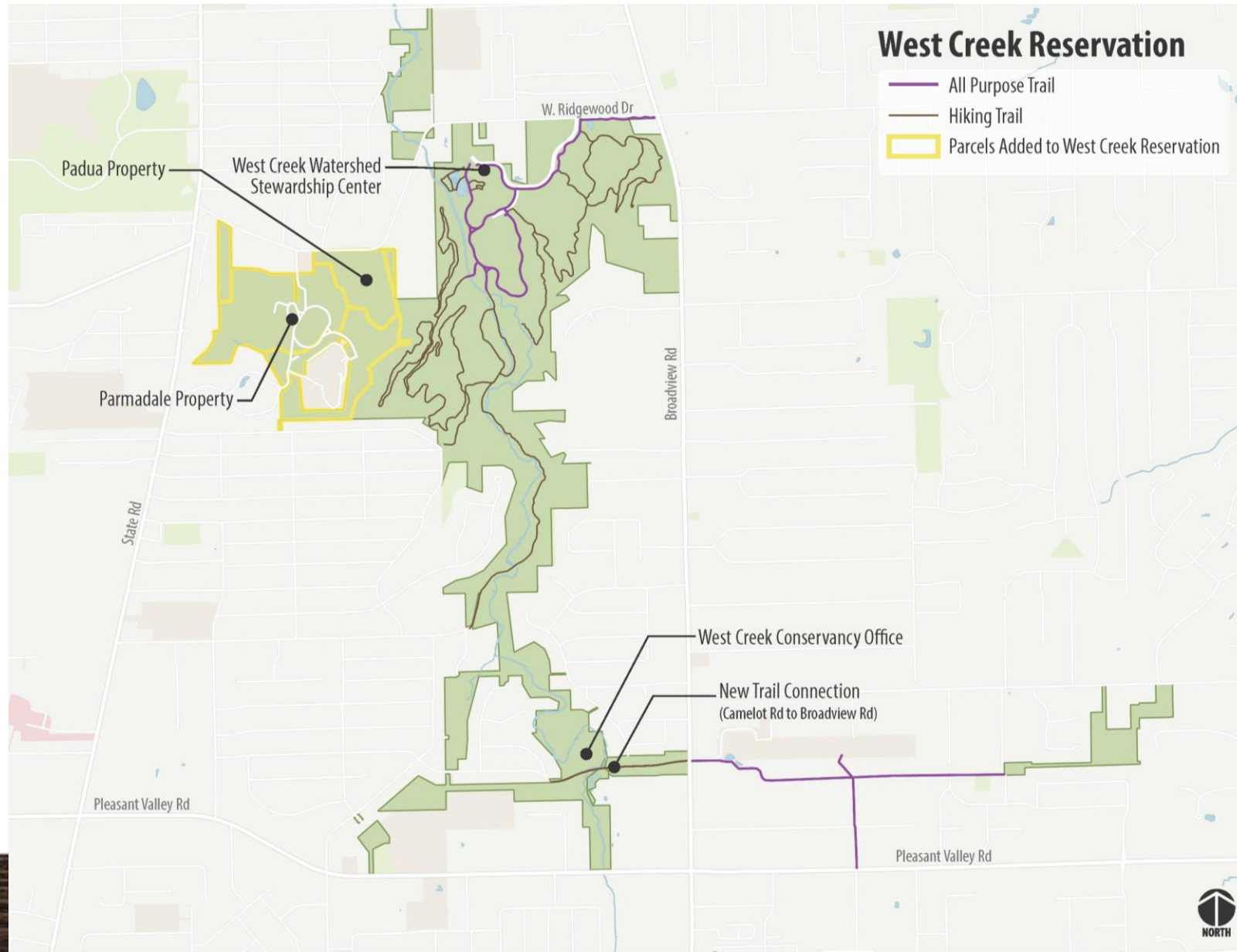
- Viaduct Park created in 2000 through a lease with the City of Bedford
- Offers trails and overlooks to enjoy views of the Great Falls of Tinker's Creek
- City of Bedford agreed to donate the property to expand upon Viaduct Park
- Cleveland Metroparks agreed to construct a reservable four-season shelter facility within Viaduct Park and complete an initial greening of the property



West Creek Conservancy Partnership (101 Acres)

- Parmadale (77.1 Acres)
- Padua (18.7 Acres)
- Jacubic (5.0 Acres)
- CCLRC (0.1 Acres)

West Creek Reservation



Donated Properties

KYLA3, LLC (2.5 Acres)

Brecksville Reservation

- Located east of Interstate 77 and north of Miller Rd. in Brecksville
- Primarily wooded
- Adjacent to the future Sherwin Williams Research & Development Center and Valor Acres mixed-use development
- Potential future trail connection



OW Holdings, LLC (2.5 Acres)

Rocky River Reservation

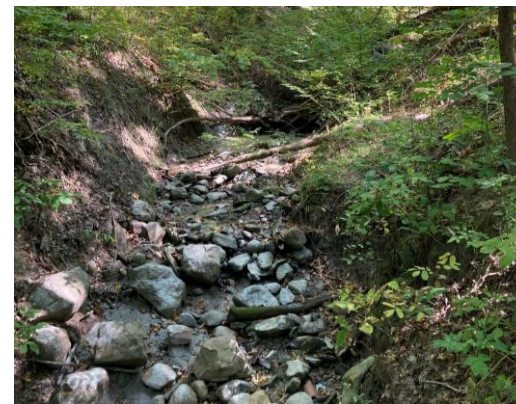
- Located on Emerald Parkway Dr. in Cleveland
- Adjacent to Oatey's headquarters
- Wooded property on the ridge of the Rocky River valley
- Protects forested land that was previously at risk of development



Bronson (2.8 Acres)

South Chagrin Reservation

- Located in the Village of Moreland Hills on the east side of the Chagrin River, and adjacent to South Chagrin Reservation
- Contains a wooded valley with sections of stream that drain to the Chagrin River



Bd. of Ed. of the CMSD (8.8 Acres)

Washington Reservation

- In 2003 established Washington Reservation with CMSD lease
- First Tee of Cleveland continued to grow
- Expansion of First Tee and opportunities to expand with addition of Washington Park Horticulture School campus



Reservation Expansions

Scothon (0.5 Acres) & Stowell (1.4 Acres) Big Creek Reservation

- Two properties adjacent to Big Creek Reservation and the Lake-to-Lake Trail
- Located on Fowles Rd. in Middleburg Heights
- Provide a buffer to the trail and a more welcoming and natural trail experience



Nicholson (12.6 Acres) South Chagrin Reservation

- Acquired undeveloped 12.6 acres of 14.7-acre property
- Aurora Road in Solon
- Category 2 wetlands
- Over 1,000 linear feet of primary headwater tributaries & Mature Beech-Mixed hardwood forest
- \$100,000 from NAWCA



Spring (0.5 Acres) West Creek Reservation

- Located at 4540 Hillside Rd. in Seven Hills
- Spring donated CE to WCC in 2010
- 2020 WCC assigned CE to Cleveland Metroparks
- Desired a stronger real estate interest in entirety of property



VOH – Pearl, LLC (0.6 Acres) Cleveland Metroparks Zoo

- Located at 4100 Pearl Road in Cleveland, adjacent to Cleveland Metroparks Zoo
- Situated near the intersection of Pearl Rd. and Wildlife Way
- Offered an opportunity to enhance entrance to the Zoo
- Across from Brighton Park

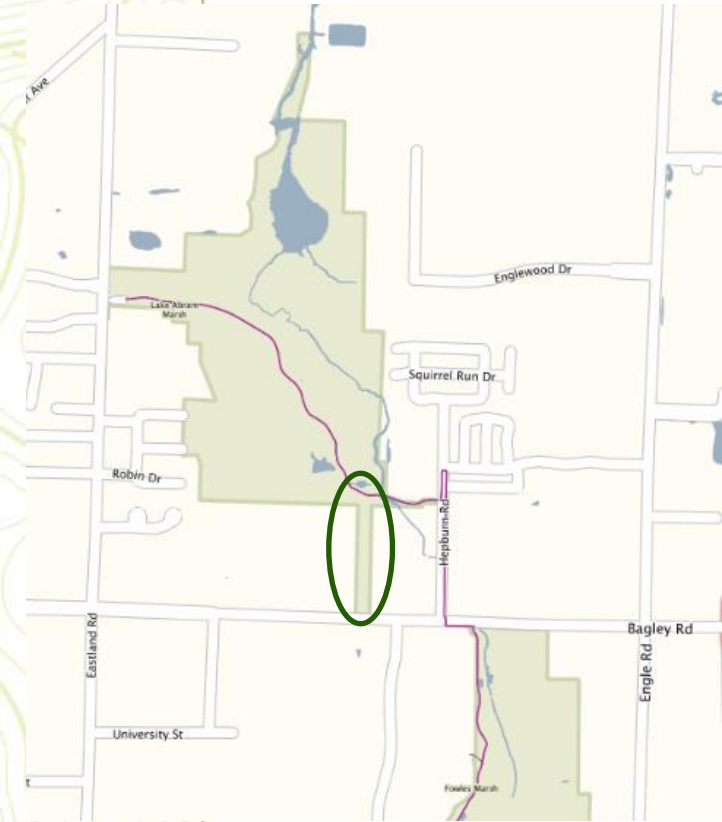


Land Bank Properties

Middleburg Heights Land Reutilization Program (3.2 Acres)

Big Creek Reservation

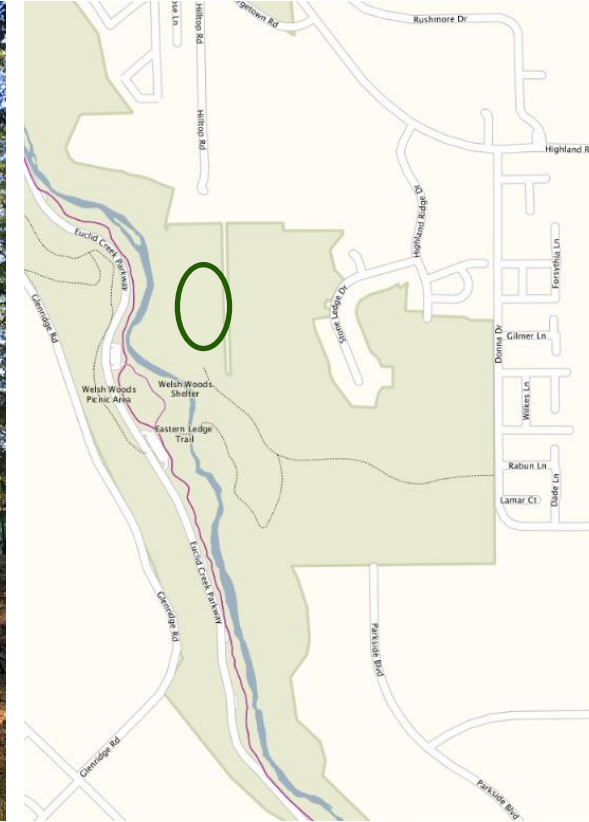
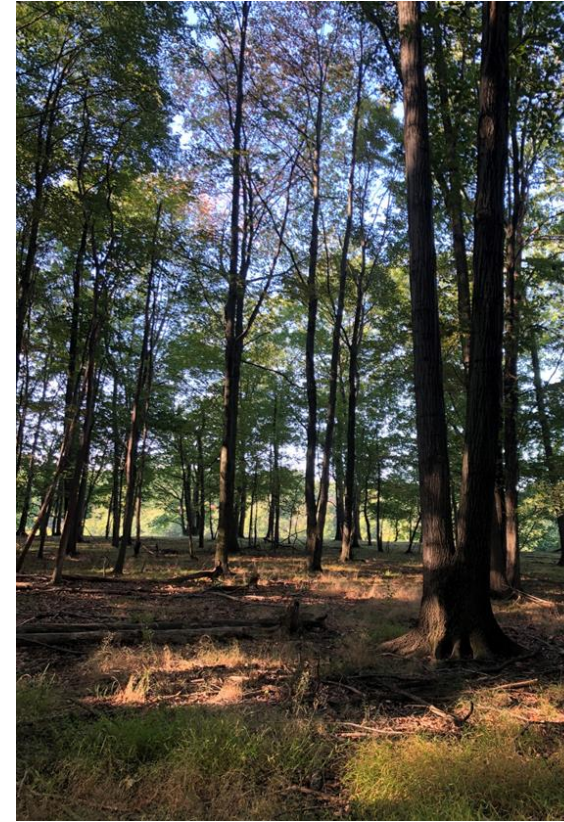
- Cleveland Metroparks committed to building a trailhead on the property within 5 years



City of Richmond Heights Land Reutilization Corp. (2.2 Acres)

Euclid Creek Reservation

- Consists of 2 parcels of wooded land in close proximity to Euclid Creek Reservation's Eastern Ledge Trail.



Conservation by the Numbers

Reservation	Acres*
Acacia	156
Bedford	2,862
Big Creek	778
Bradley Woods	835
Brecksville	4,313
Brookside	176
Euclid Creek	559
Garfield Park	224
Hinckley	3,235
Huntington	103
Lakefront	535
Mill Stream Run	3,528
North Chagrin	2,189
Ohio & Erie Canal	405
Rocky River	2,584
South Chagrin	1,904
Washington	68
West Creek	570
Zoo	180
Total:	25,204

Community	Acres*
Bainbridge Township	16
Bay Village	103
Bedford	1,049
Bedford Heights	195
Bentleyville	746
Berea	383
Brecksville	3,410
Broadview Heights	396
Brook Park	259
Brooklyn	37
Brooklyn Heights	35
Chagrin Falls	8
Chagrin Falls Township	38
Cleveland	1,806
Cuyahoga Heights	248
Euclid	276
Fairview Park	681
Garfield Heights	254
Gates Mills	547

Community	Acres*
Glenwillow	4
Hinckley Township	3,056
Hunting Valley	3
Independence	56
Lakewood	177
Lyndhurst	156
Maple Heights	75
Mayfield Village	633
Middleburg Heights	644
Moreland Hills	391
Newburgh Heights	39
North Olmsted	766
North Ridgeville	27
North Royalton	1,133
Oakwood	63
Olmsted Township	196
Parma	643
Parma Heights	137
Richfield Township	179

Community	Acres*
Richmond Heights	81
Rocky River	49
Sagamore Hills Township	162
Seven Hills	12
Solon	698
South Euclid	78
Strongsville	2,347
Valley View	297
Walton Hills	1,195
Westlake	411
Willoughby Hills	1,007
Total:	25,204

County	Acres*
Cuyahoga	20,756
Geauga	16
Lake	1,007
Lorain	27
Medina	3,056
Summit	341
Total:	25,204

* Acreages are accurate within 1 acre



Watershed Data

Reservation	Watershed	Acres
Acacia	Euclid Creek	156
Bedford	Cuyahoga River	2,862
Big Creek	Cuyahoga River	261
	Rocky River	517
Bradley Woods	Black River	449
	Lake Erie Tribs	386
Brecksville	Cuyahoga River	3,960
	Rocky River	353
Brookside	Cuyahoga River	176
Euclid Creek	Euclid Creek	506
	Lake Erie Tribs	53
Garfield Park	Cuyahoga River	224
Hinckley	Rocky River	3,235
Huntington	Lake Erie Tribs	103
Lakefront	Cuyahoga River	21
	Lake Erie Tribs	514
Mill Stream Run	Rocky River	3,528
North Chagrin	Chagrin River	2,189
Ohio & Erie Canal	Cuyahoga River	405
Rocky River	Rocky River	2,584
South Chagrin	Chagrin River	1,368
	Cuyahoga River	536
Washington	Cuyahoga River	68
West Creek	Cuyahoga River	570
Zoo	Cuyahoga River	180
Total:		25,204



Surpassing 25,000 Acres

Reservation	Acres
2021	
Big Creek	3.5
Bradley Woods	1.5
Brecksville	80.1
Brookside	24.5
Euclid Creek	0.6
Garfield Park	0.9
Hinckley	97.4
Lakefront	13.0
Mill Stream Run	0.2
Rocky River	0.4
South Chagrin	5.0
West Creek	41.6
Zoo	0.9
Total:	269.6

Reservation	Acres
2022	
Bedford	249.8
Bradley Woods	1.7
Brecksville	20.0
Brookside	19.5
Euclid Creek	19.4
Garfield Park	0.1
Hinckley	5.8
Lakefront	0.9
Mill Stream Run	19.5
South Chagrin	4.3
West Creek	0.6
Total:	341.7

Reservation	Acres
2023	
Bedford	6.4
Big Creek	5.1
Brecksville	2.5
Euclid Creek	2.2
Hinckley	154.3
Lakefront	51.1
Rocky River	2.5
South Chagrin	164.5
Washington	8.8
West Creek	101.4
Zoo	0.6
Total:	499.4
3 Year Total:	1,110.7

Adding Over 1,000 Acres in Just Three Short Years

Key Acquisitions Exceeding 25 Acres:

- West Creek Conservancy, Valley View Conservation Easement, Bedford Reservation (155 acres)
- Ironwood Golf Course, Hinckley Reservation (154 acres)
- Hawthorne Valley Country Club, South Chagrin Reservation (149 acres)
- West Creek Conservancy, Parmadale Property, West Creek Reservation (77 acres)
- Williams Property, Brecksville Reservation (75 acres)
- Uthoff Property, Hinckley Reservation (53 acres)
- City of Cleveland, Gordon Park South, Lakefront Reservation (48 acres)
- City of Garfield Heights, Wargo Farms, Bedford Reservation (45 acres)
- Richfield Township, Rising Valley Park, Hinckley Reservation (45 acres)
- West Creek Conservancy 5th Lease Amendment, West Creek Reservation (42 acres)
- West Creek Conservancy, Boyas Property, Bedford Reservation (26 acres)
- Western Reserve Land Conservancy, Brighton Park, Brookside Reservation (25 acres)

Golf Course Acquisitions



Seneca, 2011 (478 acres)



Acacia, 2012 (155 acres)



Astorhurst, 2018 (127 acres)



Hawthorne, 2023 (149 acres)

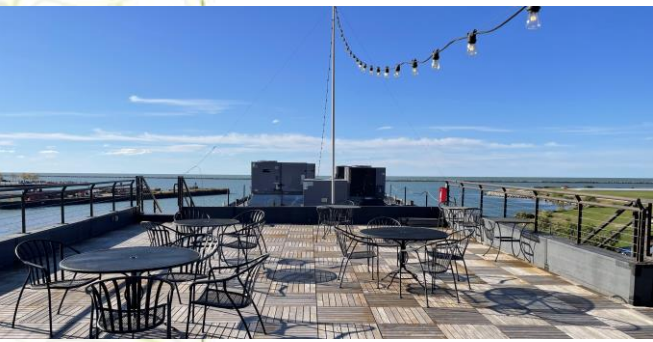


Ironwood, 2023 (154 acres)

- Since 2011 Cleveland Metroparks has acquired five golf courses, including Seneca, Acacia, Astorhurst, Hawthorne, and Ironwood, totaling 1,063 acres.
- In 2023 golf course acquisitions accounted for over 60 percent of the total acreage Cleveland Metroparks acquired, and nearly 30 percent of the total land acquired since 2011.
- These five golf courses have represented the largest individual acquisitions since 2011, with the exception of the City of Cleveland Lakefront Lease.

Barge No. 225 – Lakefront Reservation Nature Center

- Lean Dog Barge (Hornblower's Barge) was relocated to Wildwood Marina
- Provides a space for creative park programming, connecting guests to the Lakefront
- Will expand STEM education initiatives as a year-round floating Nature Center



Land Stewardship – Clean Up Projects

- In 2023 three volunteer clean up projects took place in Bradley Woods, Garfield Park and Bedford Reservations stemming from field inspections and property boundary monitoring:
 - Bradley Woods, Katie Saar
 - 5 bags of trash and a variety of other large items
 - Garfield Park Reservation, Grant Hodge
 - 12 bags of trash and filled a truck bed with additional trash and debris
 - Bedford Reservation, Amanda Creque
 - Multiple clean up events
 - 50 bags of trash along with 187 tires
- Thank you to Park Operations and Volunteer Services for all your hard work in coordinating these clean ups





Cleveland Metroparks®

FIND YOUR PATH

Thank You

Questions?