



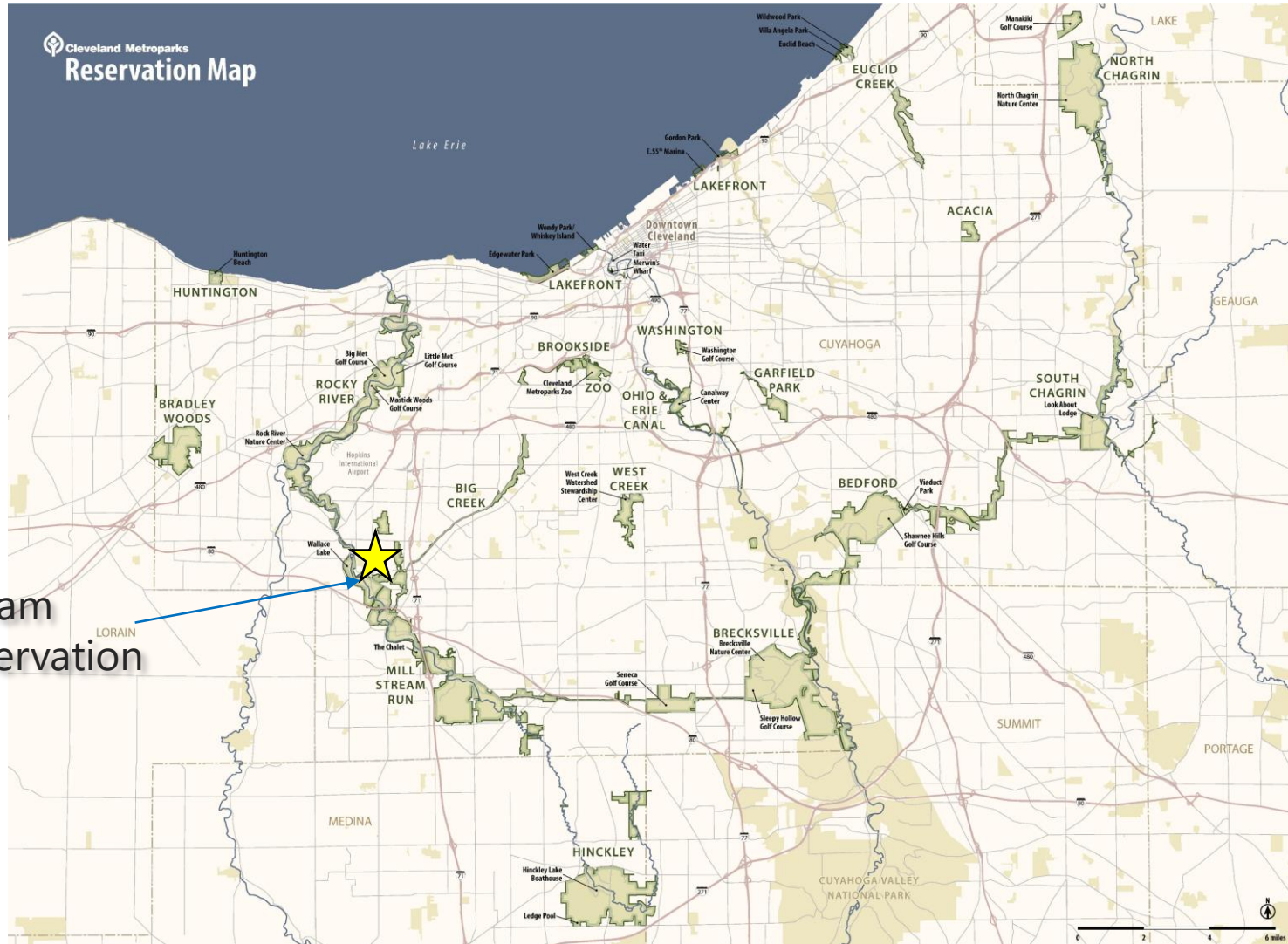
Cleveland Metroparks®

FIND YOUR PATH

Baldwin Creek Dam Removal
Mill Stream Run Reservation

October 19, 2023

Baldwin Creek Dam Removal



Mill Stream
Run Reservation

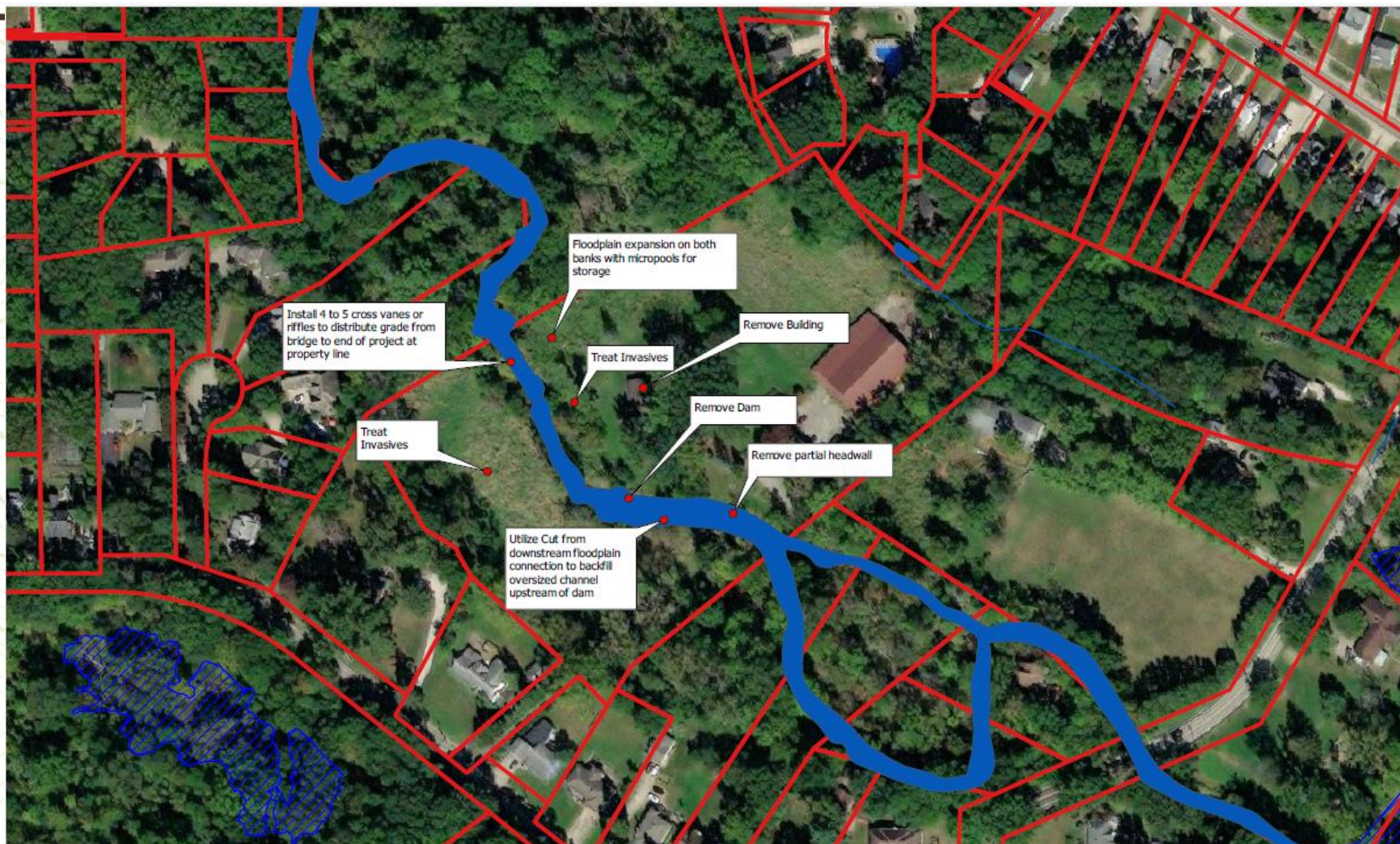
Baldwin Creek Dam Removal



Baldwin Property:

- Acquired 10/11/22
- Partnership with the Northeast Ohio Regional Sewer District
- Chronic Flooding
- 8.2 acres in the City of Berea
- Baldwin Creek
- Habitat Restoration

Baldwin Creek Dam Removal



Baldwin Creek Dam Removal



Baldwin Dam Removal:

- Water Resource Restoration Sponsor Program (WRRSP)
- \$706,731 Grant Award
- Dam Removal
- 510' Stream Restoration of Baldwin Creek
 - Bank Stabilization
 - Floodplain Connectivity
- Structure Demolition

Baldwin Creek Dam Removal



H- Existing house and hardscape to be demolished.



I- Existing barn and hardscape to be demolished.



J- Existing hardscape to be demolished.



K- Existing house and hardscape to be demolished.

Baldwin Creek Dam Removal



Baldwin Dam Removal Schedule:

- Design-Builder Selection – 2023
- Design & Permitting - 2024
- Construction Start – Spring 2025
- Construction Complete – Fall 2025



Cleveland Metroparks®

FIND YOUR PATH



Baldwin Creek Dam Removal
Mill Stream Run Reservation

October 19, 2023



Cleveland Metroparks®

FIND YOUR PATH

Wendy Park Nature Based Shoreline Restoration
Lakefront Reservation

October 19, 2023

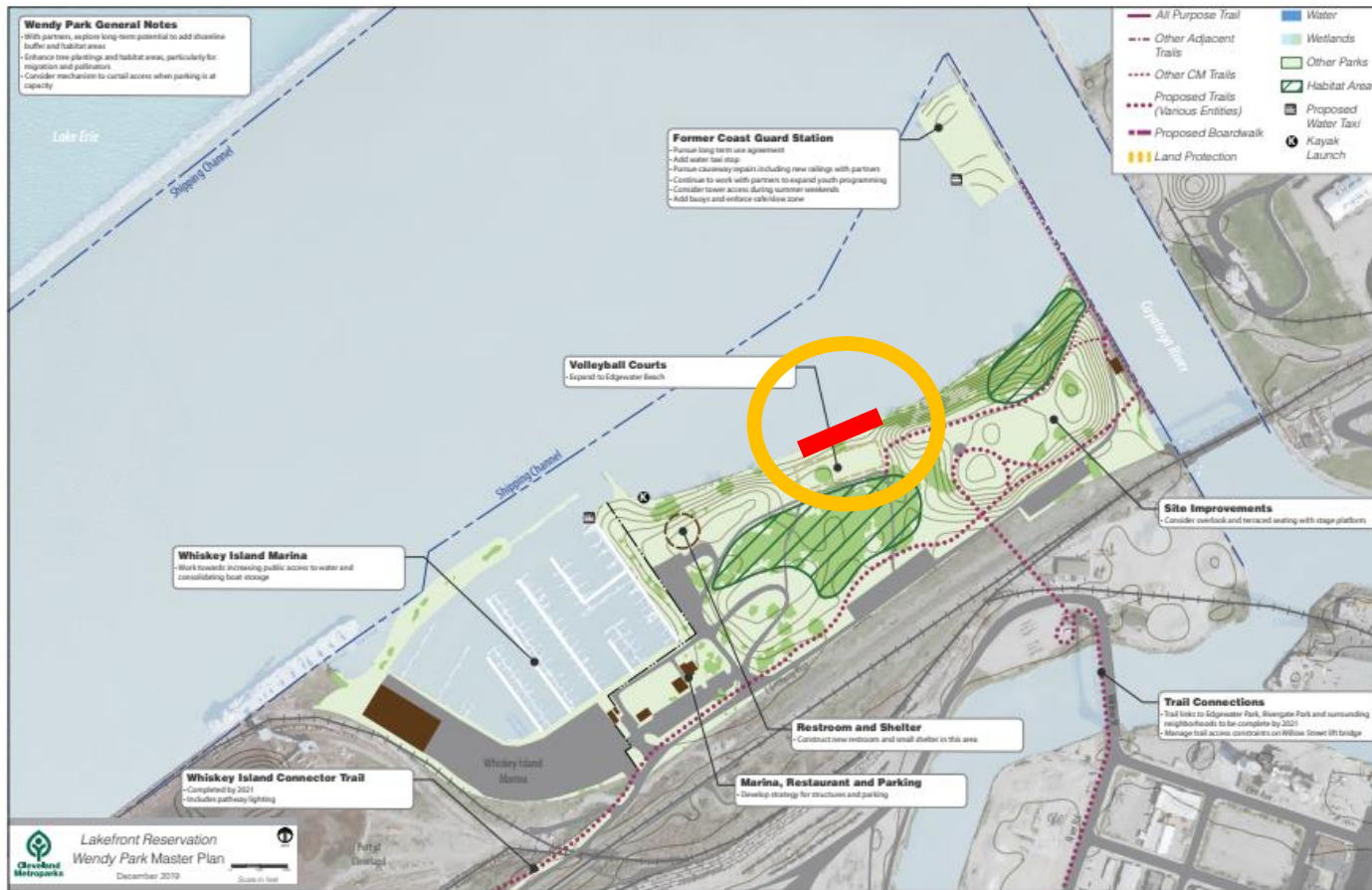
Wendy Park Nature Based Shoreline Restoration



Wendy Park Nature Based Shoreline Restoration

LAKEFRONT RESERVATION - WENDY PARK

RESERVATION MASTER PLANS



Wendy Park Nature Based Shoreline Restoration



Wendy Park Shoreline Restoration

- Erosion and Shoreline Loss
- Ohio Department of Natural Resources (ODNR) Grant
- Nature Based Design



Wendy Park Nature Based Shoreline Protection



CONCEPTUAL DRAW
NOT FOR CONSTRUCTION

POINT	DESCRIPTION	N	E
1	SPIN - 1/2" METROPARKS TRAY CAP	848.40	848.40
2	SPIN - 1/2" METROPARKS TRAY CAP	848.40	848.40
3	SPIN - 1/2" METROPARKS TRAY CAP	848.40	848.40
4	SPIN - 1/2" METROPARKS TRAY CAP	848.40	848.40
5	SPIN - 1/2" METROPARKS TRAY CAP	848.40	848.40
6	SPIN - 1/2" METROPARKS TRAY CAP	848.40	848.40
7	SPIN - 1/2" METROPARKS TRAY CAP	848.40	848.40
8	SPIN - 1/2" METROPARKS TRAY CAP	848.40	848.40
9	SPIN - 1/2" METROPARKS TRAY CAP	848.40	848.40
10	SPIN - 1/2" METROPARKS TRAY CAP	848.40	848.40
11	SPIN - 1/2" METROPARKS TRAY CAP	848.40	848.40
12	SPIN - 1/2" METROPARKS TRAY CAP	848.40	848.40
13	SPIN - 1/2" METROPARKS TRAY CAP	848.40	848.40
14	SPIN - 1/2" METROPARKS TRAY CAP	848.40	848.40
15	SPIN - 1/2" METROPARKS TRAY CAP	848.40	848.40
16	SPIN - 1/2" METROPARKS TRAY CAP	848.40	848.40
17	SPIN - 1/2" METROPARKS TRAY CAP	848.40	848.40
18	SPIN - 1/2" METROPARKS TRAY CAP	848.40	848.40
19	SPIN - 1/2" METROPARKS TRAY CAP	848.40	848.40
20	SPIN - 1/2" METROPARKS TRAY CAP	848.40	848.40
21	SPIN - 1/2" METROPARKS TRAY CAP	848.40	848.40
22	SPIN - 1/2" METROPARKS TRAY CAP	848.40	848.40
23	SPIN - 1/2" METROPARKS TRAY CAP	848.40	848.40
24	SPIN - 1/2" METROPARKS TRAY CAP	848.40	848.40
25	SPIN - 1/2" METROPARKS TRAY CAP	848.40	848.40
26	SPIN - 1/2" METROPARKS TRAY CAP	848.40	848.40
27	SPIN - 1/2" METROPARKS TRAY CAP	848.40	848.40
28	SPIN - 1/2" METROPARKS TRAY CAP	848.40	848.40
29	SPIN - 1/2" METROPARKS TRAY CAP	848.40	848.40
30	SPIN - 1/2" METROPARKS TRAY CAP	848.40	848.40
31	SPIN - 1/2" METROPARKS TRAY CAP	848.40	848.40
32	SPIN - 1/2" METROPARKS TRAY CAP	848.40	848.40
33	SPIN - 1/2" METROPARKS TRAY CAP	848.40	848.40
34	SPIN - 1/2" METROPARKS TRAY CAP	848.40	848.40
35	SPIN - 1/2" METROPARKS TRAY CAP	848.40	848.40
36	SPIN - 1/2" METROPARKS TRAY CAP	848.40	848.40
37	SPIN - 1/2" METROPARKS TRAY CAP	848.40	848.40
38	SPIN - 1/2" METROPARKS TRAY CAP	848.40	848.40
39	SPIN - 1/2" METROPARKS TRAY CAP	848.40	848.40
40	SPIN - 1/2" METROPARKS TRAY CAP	848.40	848.40
41	SPIN - 1/2" METROPARKS TRAY CAP	848.40	848.40
42	SPIN - 1/2" METROPARKS TRAY CAP	848.40	848.40
43	SPIN - 1/2" METROPARKS TRAY CAP	848.40	848.40
44	SPIN - 1/2" METROPARKS TRAY CAP	848.40	848.40
45	SPIN - 1/2" METROPARKS TRAY CAP	848.40	848.40
46	SPIN - 1/2" METROPARKS TRAY CAP	848.40	848.40
47	SPIN - 1/2" METROPARKS TRAY CAP	848.40	848.40
48	SPIN - 1/2" METROPARKS TRAY CAP	848.40	848.40
49	SPIN - 1/2" METROPARKS TRAY CAP	848.40	848.40
50	SPIN - 1/2" METROPARKS TRAY CAP	848.40	848.40
51	SPIN - 1/2" METROPARKS TRAY CAP	848.40	848.40
52	SPIN - 1/2" METROPARKS TRAY CAP	848.40	848.40
53	SPIN - 1/2" METROPARKS TRAY CAP	848.40	848.40
54	SPIN - 1/2" METROPARKS TRAY CAP	848.40	848.40
55	SPIN - 1/2" METROPARKS TRAY CAP	848.40	848.40
56	SPIN - 1/2" METROPARKS TRAY CAP	848.40	848.40
57	SPIN - 1/2" METROPARKS TRAY CAP	848.40	848.40
58	SPIN - 1/2" METROPARKS TRAY CAP	848.40	848.40
59	SPIN - 1/2" METROPARKS TRAY CAP	848.40	848.40
60	SPIN - 1/2" METROPARKS TRAY CAP	848.40	848.40
61	SPIN - 1/2" METROPARKS TRAY CAP	848.40	848.40
62	SPIN - 1/2" METROPARKS TRAY CAP	848.40	848.40
63	SPIN - 1/2" METROPARKS TRAY CAP	848.40	848.40
64	SPIN - 1/2" METROPARKS TRAY CAP	848.40	848.40
65	SPIN - 1/2" METROPARKS TRAY CAP	848.40	848.40
66	SPIN - 1/2" METROPARKS TRAY CAP	848.40	848.40
67	SPIN - 1/2" METROPARKS TRAY CAP	848.40	848.40
68	SPIN - 1/2" METROPARKS TRAY CAP	848.40	848.40
69	SPIN - 1/2" METROPARKS TRAY CAP	848.40	848.40
70	SPIN - 1/2" METROPARKS TRAY CAP	848.40	848.40
71	SPIN - 1/2" METROPARKS TRAY CAP	848.40	848.40
72	SPIN - 1/2" METROPARKS TRAY CAP	848.40	848.40
73	SPIN - 1/2" METROPARKS TRAY CAP	848.40	848.40
74	SPIN - 1/2" METROPARKS TRAY CAP	848.40	848.40
75	SPIN - 1/2" METROPARKS TRAY CAP	848.40	848.40
76	SPIN - 1/2" METROPARKS TRAY CAP	848.40	848.40
77	SPIN - 1/2" METROPARKS TRAY CAP	848.40	848.40
78	SPIN - 1/2" METROPARKS TRAY CAP	848.40	848.40
79	SPIN - 1/2" METROPARKS TRAY CAP	848.40	848.40
80	SPIN - 1/2" METROPARKS TRAY CAP	848.40	848.40
81	SPIN - 1/2" METROPARKS TRAY CAP	848.40	848.40
82	SPIN - 1/2" METROPARKS TRAY CAP	848.40	848.40
83	SPIN - 1/2" METROPARKS TRAY CAP	848.40	848.40
84	SPIN - 1/2" METROPARKS TRAY CAP	848.40	848.40
85	SPIN - 1/2" METROPARKS TRAY CAP	848.40	848.40
86	SPIN - 1/2" METROPARKS TRAY CAP	848.40	848.40
87	SPIN - 1/2" METROPARKS TRAY CAP	848.40	848.40
88	SPIN - 1/2" METROPARKS TRAY CAP	848.40	848.40
89	SPIN - 1/2" METROPARKS TRAY CAP	848.40	848.40
90	SPIN - 1/2" METROPARKS TRAY CAP	848.40	848.40
91	SPIN - 1/2" METROPARKS TRAY CAP	848.40	848.40
92	SPIN - 1/2" METROPARKS TRAY CAP	848.40	848.40
93	SPIN - 1/2" METROPARKS TRAY CAP	848.40	848.40
94	SPIN - 1/2" METROPARKS TRAY CAP	848.40	848.40
95	SPIN - 1/2" METROPARKS TRAY CAP	848.40	848.40
96	SPIN - 1/2" METROPARKS TRAY CAP	848.40	848.40
97	SPIN - 1/2" METROPARKS TRAY CAP	848.40	848.40
98	SPIN - 1/2" METROPARKS TRAY CAP	848.40	848.40
99	SPIN - 1/2" METROPARKS TRAY CAP	848.40	848.40
100	SPIN - 1/2" METROPARKS TRAY CAP	848.40	848.40

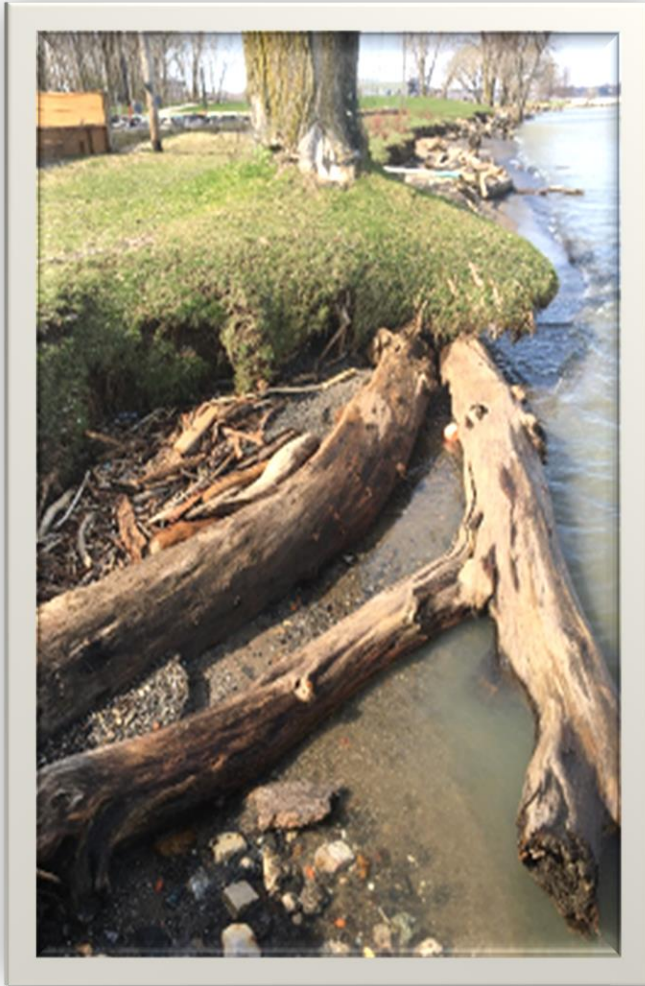
1. VERTICAL DATUM IS BLD 1985.
2. ALL PLANT SPECIES USED FOR THE PROJECT SHALL BE APPROVED IN ADVANCE BY THE OWNER.
3. SAND FOR LEACH RILL SHALL BE FROM AN OWNER-APPROVED UPLAND SOURCE CONFORMING TO THE QUALITY MODEL.

PROJECT:
NATURE-BASED
PROTECTION AT
WENDY PARK
GENERAL CONTRACTOR:
GENERAL CONTRACTOR

SHEET
1 OF 4

JOB NO.
22003

Wendy Park Nature Based Shoreline Restoration



Wendy Park Shoreline Restoration Schedule

- NOAA Grant Award – Fall 2023
- Project Bidding – Fall 2023
- Construction – Spring 2024
- Nature Based Training (ODNR)
 - Spring 2024
- Construction Complete
 - Summer 2024



Cleveland Metroparks®

FIND YOUR PATH

Wendy Park Nature Based Shoreline Restoration
Lakefront Reservation

October 19, 2023

Hart Crane Park Location

